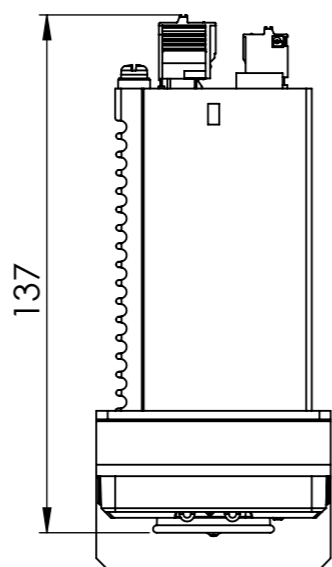
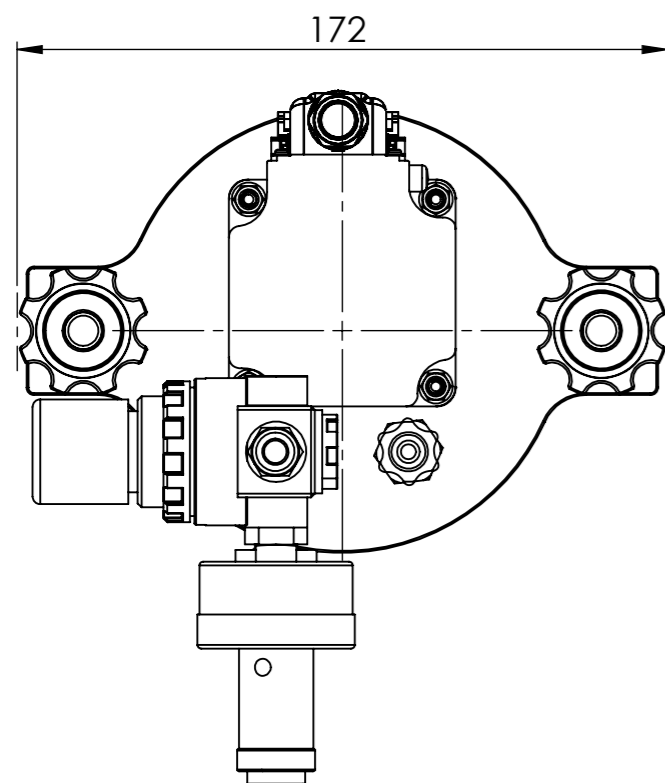


NOTE :

1. DIMENSIONS ARE IN mm
2. MATERIALS :
 tank and cover : stainless steel 303/304 (316 option)
 dip tube :
 output fittings : polypropylene
 oring : Viton
3. MAXIMUM PRESSURE : 100 PSI (6.9 bar)
4. CAPACITY WITHOUT LINER : 1 LITRE
5. INSIDE DIMENSIONS : $\varnothing 100\text{mm} \times 135\text{mm DEEP}$
6. DRY WEIGHT :
7. DIMENSIONS ARE FOR REFERENCE ONLY
8. ALSO SUPPLIED :



ELECTRIC MOTOR 30W
MONOPHASE 230V

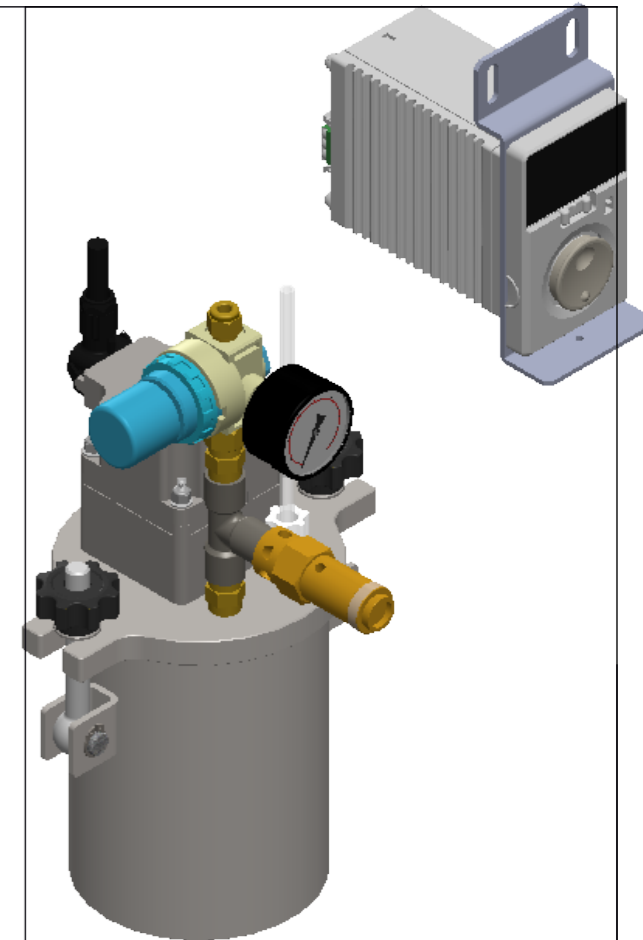
MOTOR CONTROLER
AND ITS SUPPORT
(VARIOUS OPTIONS)

AIR PRESSURE REGULATOR and GAUGE

AIR SAFETY RELIEF VALVE

COMPRESSION FITTING

MIXER SHAFT
AND PROPELLER



REVISION	INITIALS	DATE	MODIFICATIONS
A	NR	25.03.18	INITIAL ISSUE
B	NR	23.04.20	UPDATE OF VARIOUS ELEMENTS

This document must not be copied without our written permission, and the contents thereof must not be imparted to a third party nor be used for any unauthorised purpose. Contravention will be prosecuted.

GENERAL TOLERANCE
Unless otherwise stated
 Linear: 0.0 +/- 0.25
 Angular: 0.0 +/- 1°
 Surface Roughness: Ra1.6

	NAME	DATE	
DRAWN	NICOLAS REYNIER	25.03.2018	ISO STANDARD FOR Thread class external 6g internal 6H Geometric Tolerances
APPV'D	SIMON KAYE		

SR-TEK MATERIAL: STAINLESS STEEL
 FINISH: BRUSHED

DO NOT SCALE DRAWING

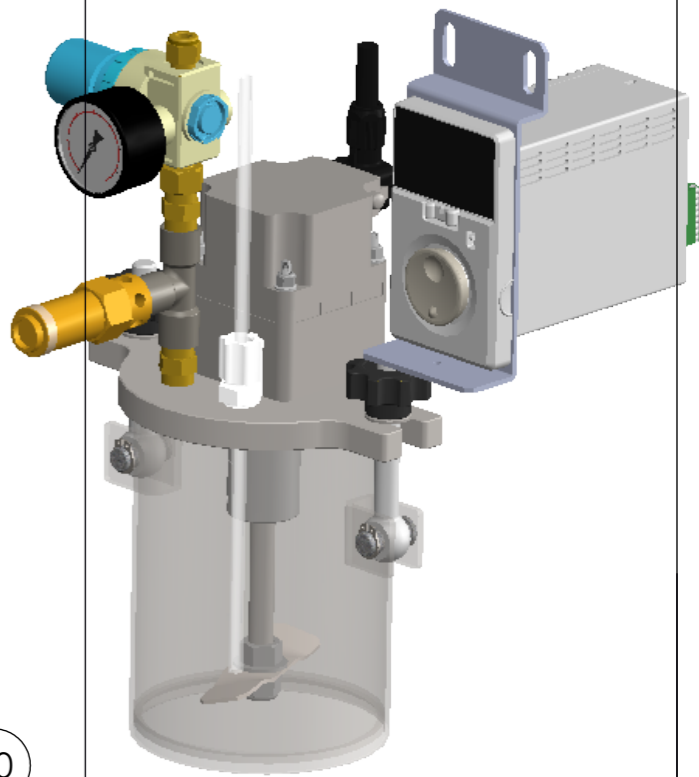
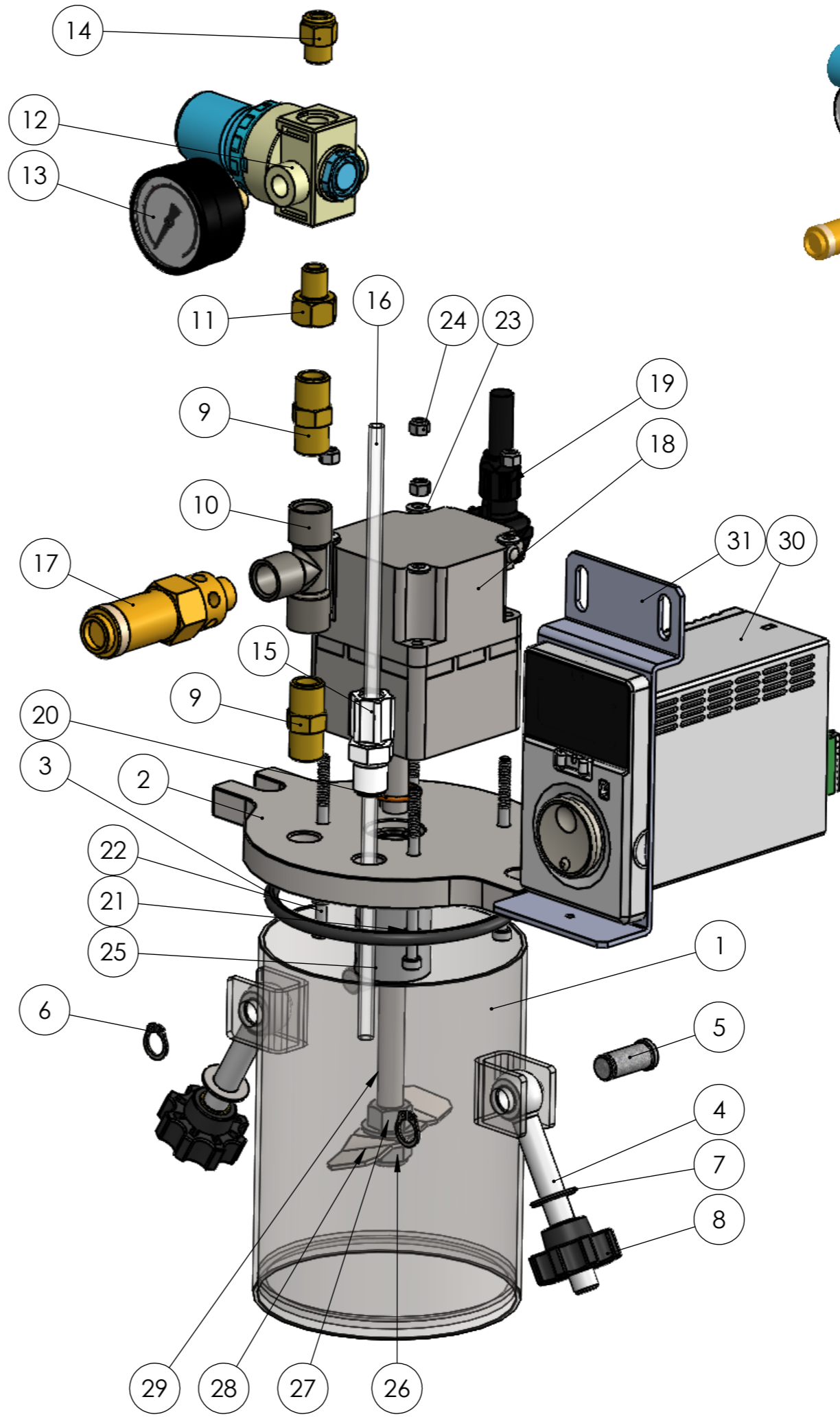
BREAK SHARP EDGES WITH CHAMFER 0.3x45° WEIGHT: g

TITLE:
1L RESERVOIR ASSY WITH ELECTRIC AGITATION

DWG NO. **1000ML-STEL** Revision B A3

SCALE: 1:2 IF IN DOUBT ASK SHEET 1 OF 2

#	PART NUMBER	DESCRIPTION	QTY
1	1011B	1L RESERVOIR BODY	1
2	1010L-EL	1L & 2L RESERVOIR LID	1
3	OR-4.5-90	O-RING 90mm ID x 4.5mm	1
4	BM10x75SSSWING	SWING BOLT M10	2
5	1015	DOWEL PIN	2
6	HCIRCLIPXT10	CIRCLIP EXTERNAL D10	2
7	WM10-19SS	WASHER M10	2
8	NM10PLSTAR	EIGHT LOBED KNOB M10 PLASTIC BRASS	2
9	HNIPPLE0.25	NIPPLE NPT 1/4"	2
10	HTEE0.25BR	TEE 1/4 BSPT BRASS	1
11	HADAPTERF.25-M.125	1/8 MALE 1/4 FEMALE BSP NIPPLE ADAPTER	1
12	HREGULATORAIR100	PRESSURE REGULATOR 0-100 PSI	1
13	AN-100-G	PRESSURE GAUGE 0-100PSI	1
14	HADAPTER0.125-6	STRAIGHT ADAPTOR G1/8 x 6mm	1
15	FIT-0.25-COMP-6	COMPRESSION ADAPTER 1/4NPT 6mm	1
16	6PE-CL-1L	FLUID TUBING 6mm CLEAR (not supplied)	1
17	100-SV	SAFETY VALVE 0.25 100 PSI	1
18	1026	ELECTRIC MOTOR 30W	1
19	1027	ELECTRIC CABLE CONTROLER-MOTOR	1
20	OR-2-16	O-RING 16mm ID x 2mm	1
21	W4.5SSBONDED	BONDED SEAL 4.5	4
22	BM4x70SSCAP	BOLT M4x0.8 70L STAINLESS CAP HEAD	4
23	WM4SSSPRING	BELLEVILLE SPRING LOCK WASHER M4	4
24	NM4SSLOCK	NUT M4 STAINLESS NYLON LOCK	4
25	HCOUPLING1010	SHAFT COUPLER 10 10	1
26	NM10SSLOCK	LOCKING NUT M10	1
27	NM10SSFLANGE	FLANGE NUT M10	1
28	1L-9010-SINGLE	MIXING SINGLE BLADE	1
29	1021	MIXER SHAFT	1
30	1029	MOTOR CONTROLER	1
31	1028	MOTOR CONTROLER SUPPORT	1



REVISION	INITIALS	DATE	MODIFICATIONS
A	NR	25.03.18	INITIAL ISSUE
B	NR	23.04.20	UPDATE OF VARIOUS ELEMENTS

This document must not be copied without our written permission, and the contents thereof must not be imparted to a third party nor be used for any unauthorised purpose. Contravention will be prosecuted.

GENERAL TOLERANCE
Unless otherwise stated
Linear: 0.0 +/- 0.25
Angular: 0.0 +/- 1°
Surface Roughness: Ra1.6

ISO STANDARD FOR
Thread class
external 6g
internal 6H
Geometric Tolerances

SR-TEK
MATERIAL: STAINLESS STEEL
FINISH: BRUSHED

DO NOT SCALE DRAWING

BREAK SHARP EDGES WITH CHAMFER 0.3x45°

WEIGHT: g

TITLE:
1L RESERVOIR ASSEMBLY WITH ELECTRIC MOTOR

DWG NO. **1000ML-STEL**
Revision B

A3

SCALE: 1:2 IF IN DOUBT ASK SHEET 2 OF 2